

SensPERT™
Anaplasma Ab / E.canis Ab Test Kit



Anaplasma Antibody / Ehrlichia canis Antibody Test Kit



Summary : Detection of Anaplasma antibodies and E.canis antibodies from whole blood, serum, or plasma within 10 minutes

Principle : One-step immunochromatographic assay

Detection Targets : Anaplasma antibodies, E.canis antibodies

Sample : Canine Whole Blood, Plasma, and Serum

Reading time : 5 ~ 10 minutes

Quantity : 1 box (kit) = 10 devices (Individual packing)

Contents : Test kit, Buffer bottle, and Disposable droppers

Storage : Room Temperature (at 2 ~ 30 °C)

Expiration : 24 months after manufacturing

Caution :

Use within 10 minutes after opening

Use appropriate amount of sample (0.01 ml of a dropper for Anaplasma/E.canis)

Use after 15~30 minutes at RT if they are stored under cold circumstances

Consider the test results as invalid after 10 minutes

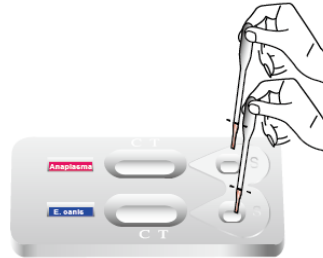
Instruction for Anaplasma Ab / Ehrlichia Ab test



Sample fill line (black line) : 1 drop (10 μ l)

1

Sampling & loading

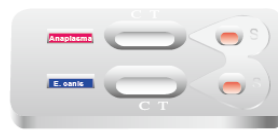


1 drop of sample

•• Do not overload the sample!!

2

Absorption



Wait for complete absorption

3

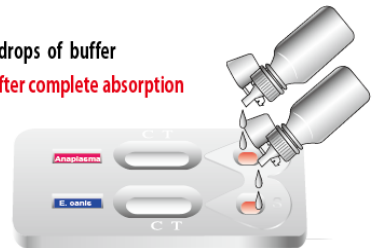
Buffer addition

00:00:00



2 drops of buffer

•• after complete absorption



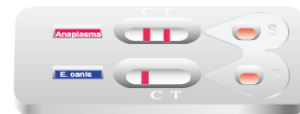
4

Reading

00:05:00~00:10:00



+



Read the result between 5 ~ 10 min

-



5

Discard

00:10:00



Discard the used device

In valid result after 10 min

